



# Kirklees; current and future opportunities

---

Edward Highfield  
Director, Skills and Regeneration, Kirklees Council



## Perfectly placed

Part of West Yorkshire, Kirklees is strategically located at the heart of the UK and the centre of the Leeds, Manchester and Sheffield City Region triangle - a pivotal central location within the UK's £339billion northern powerhouse.

Excellent transport networks include:

- Easy access to the M62, M1 & A1
- Direct rail links to Manchester and Leeds in 30 minutes, through to London in 2 hours
- Manchester and Leeds Bradford airports within 45 minutes, and a direct train to Manchester airport
- Seaports at Liverpool, Hull, Immingham and Teesport within 2 hours



# Transpennine Route Upgrade

- 10-year, multibillion-pound programme of railway improvements across the north of England, doubling network capacity
- Kirklees is a major beneficiary, making us one of the best-connected places in the North of England. 8 stations
- Reduction in journey times to Manchester, Leeds and York
- In addition to
  - WY Mass Transit - South Leeds to Dewsbury
  - Multi modal corridor improvements
  - Investment in Active Travel TCF/CRSTS

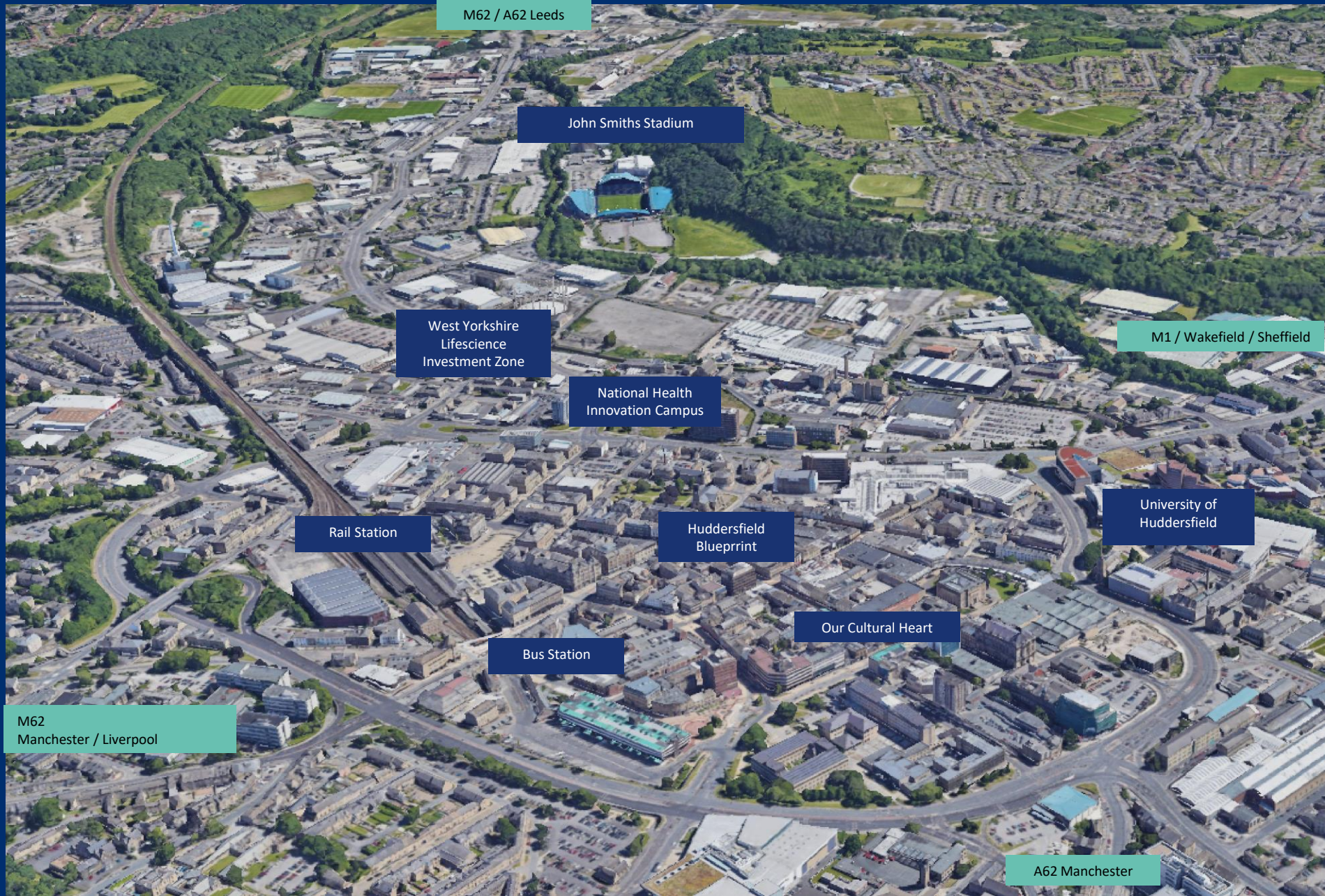


# The Penistone Rail Line

- £48 million Levelling Up Fund Round 3 (LFU3) award
- Key strategic link between Huddersfield, Barnsley and Sheffield serving 1m+ passengers annually
- 40 years of underinvestment
  - No level access at some stations
  - Journey times 21 minutes longer than 1981
  - Some of the oldest passenger rolling stock on the network
- The Vision: Connectivity and reliability improvements to provide a half-hourly rail service, under 1 hour
  - Upgrade from single to double track, and line speed works
  - Mobility Hubs
  - Improved accessibility to stations
  - New fibre broadband



# Over £1bn investment for Huddersfield town centre...



M62 / A62 Leeds

John Smiths Stadium

West Yorkshire Lifescience Investment Zone

National Health Innovation Campus

Rail Station

Huddersfield Blueprint

M1 / Wakefield / Sheffield

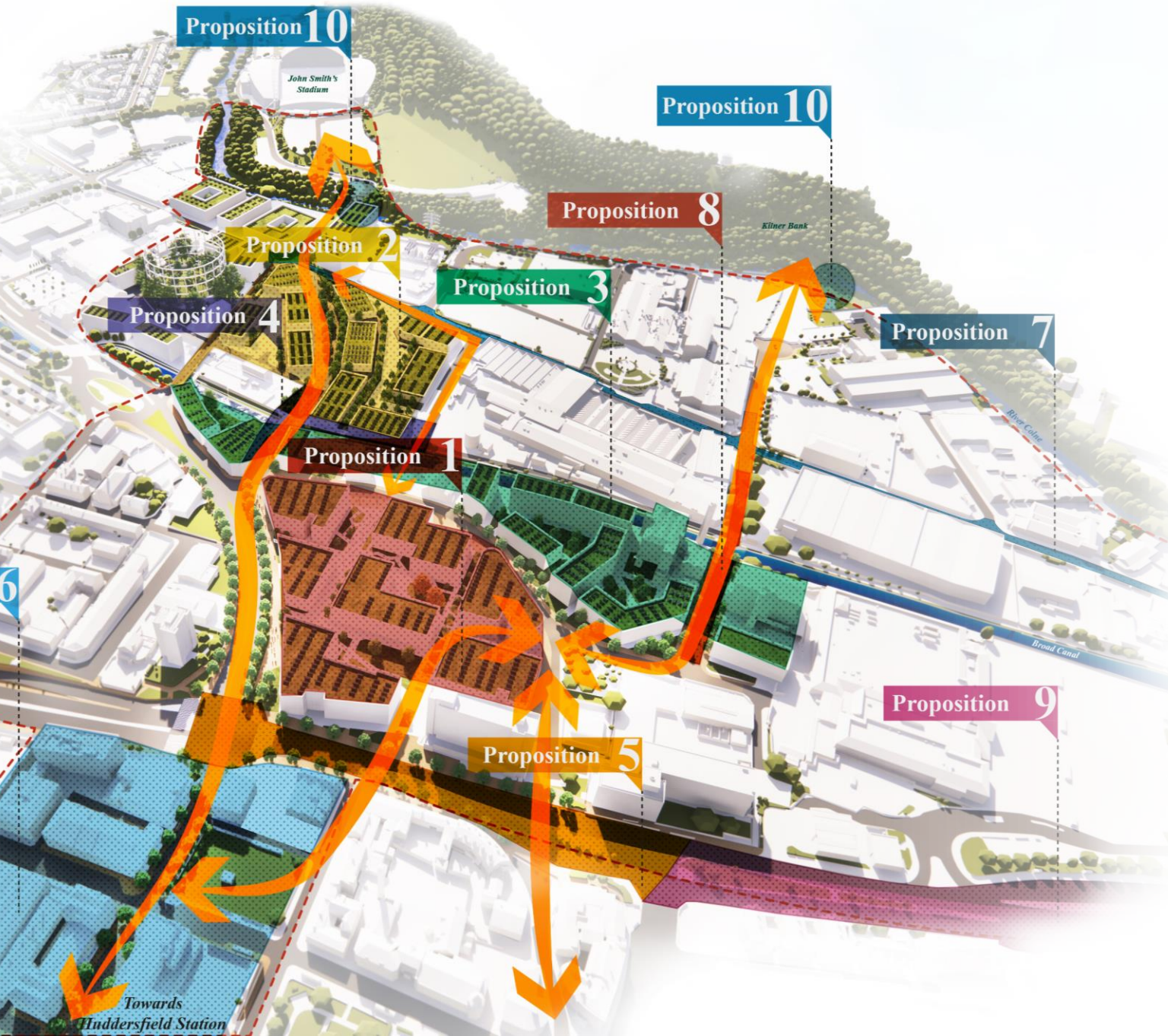
University of Huddersfield

Our Cultural Heart

Bus Station

M62 Manchester / Liverpool

A62 Manchester



# Huddersfield Station to Stadium Enterprise Corridor

- Strategic investment corridor
- Long term scheme, bringing a new focus for innovation, business investment and growth
- Connects Huddersfield Railway Station and the John Smith's Stadium.
- Key gateway into the town from the A62 Leeds Road and the train station
- Gas Works Street – major high value employment site. Upcoming opportunity

# National Health Innovation Campus (NHIC)

- £250m+ investment
- Will create the largest, most dynamic centre for workforce development, and healthcare innovation in the North of England
- Up to 75,000m<sup>2</sup> of teaching/research, business accommodation and public health clinics focused on innovation in health and wellbeing
- A catalyst for regeneration, investment, employment, and growth opportunities, including world-leading research and innovation in areas such as clinical diagnostics, and skin integrity and infection prevention.
- Seven-acre site, with planning permission for up to seven buildings
- First building opens Summer 2024, £60M
- Second building due to open Autumn 2025

*University of*  
**HUDDERSFIELD**  
National Health Innovation Campus



# West Yorkshire Lifesciences Investment Zone

- £160million over 10 years
- Partnership between local government and Universities
- Focussed on Health Tech and Digital Tech
- Health Innovation Campus and surrounding areas such as Gas Works Street, 1 of 3 geographic centres in WY
- Interventions to support innovation, jobs and growth in our thriving health and life sciences sector



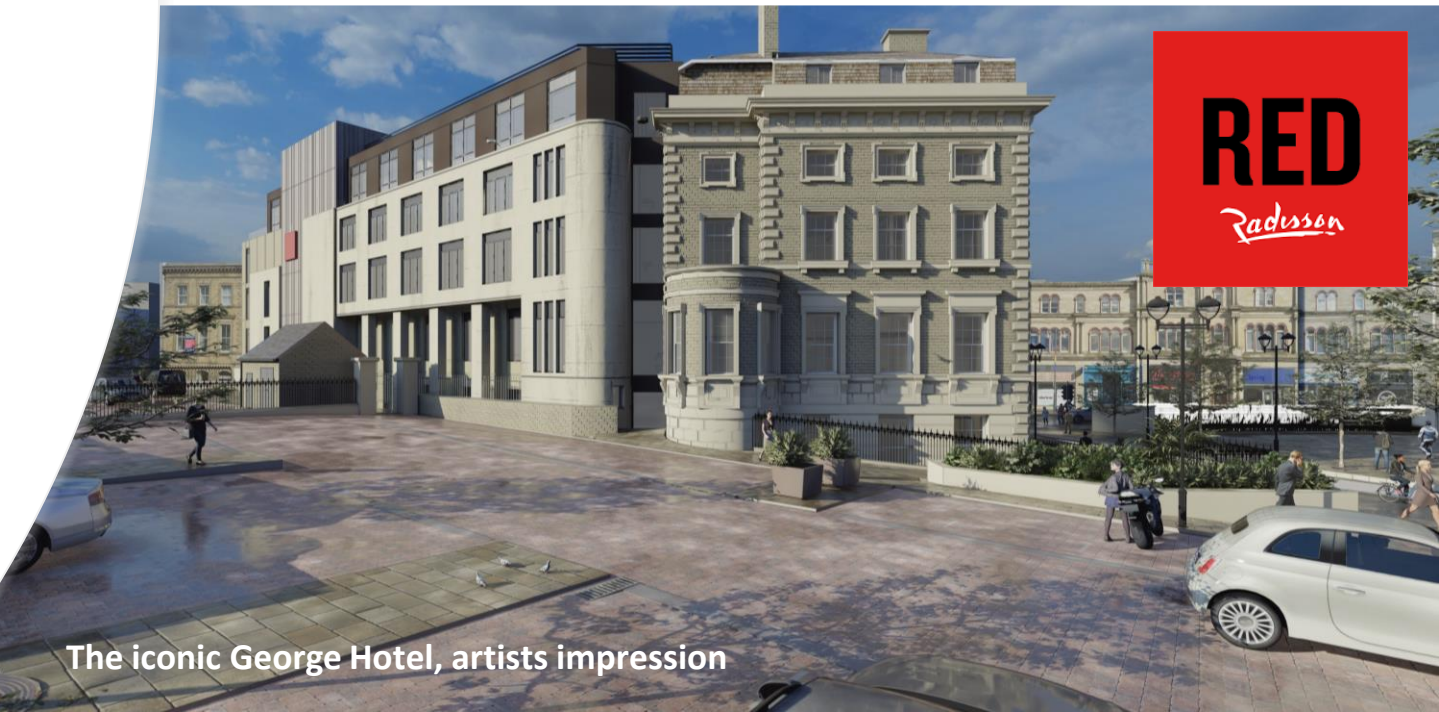


# Huddersfield Blueprint

- 10-year vision to create a thriving modern-day town centre
- Over £250m investment, breathing life into historic buildings, future proofing Huddersfield as a great place to live, work and invest
  - £20m The George Hotel, Radisson Red opening 2025
  - £16.5m restoration of Huddersfield Open Market (LUF3)
  - Our Cultural Heart, Phase 1 (£52m) , Summer 2024
  - New Street, Public Realm enhancements completed 2023
  - Kingsgate redevelopment into a £250m into a cinema and leisure complex, opens 2024
  - Repairs to the Byram Arcade and Estate Buildings nearing completion

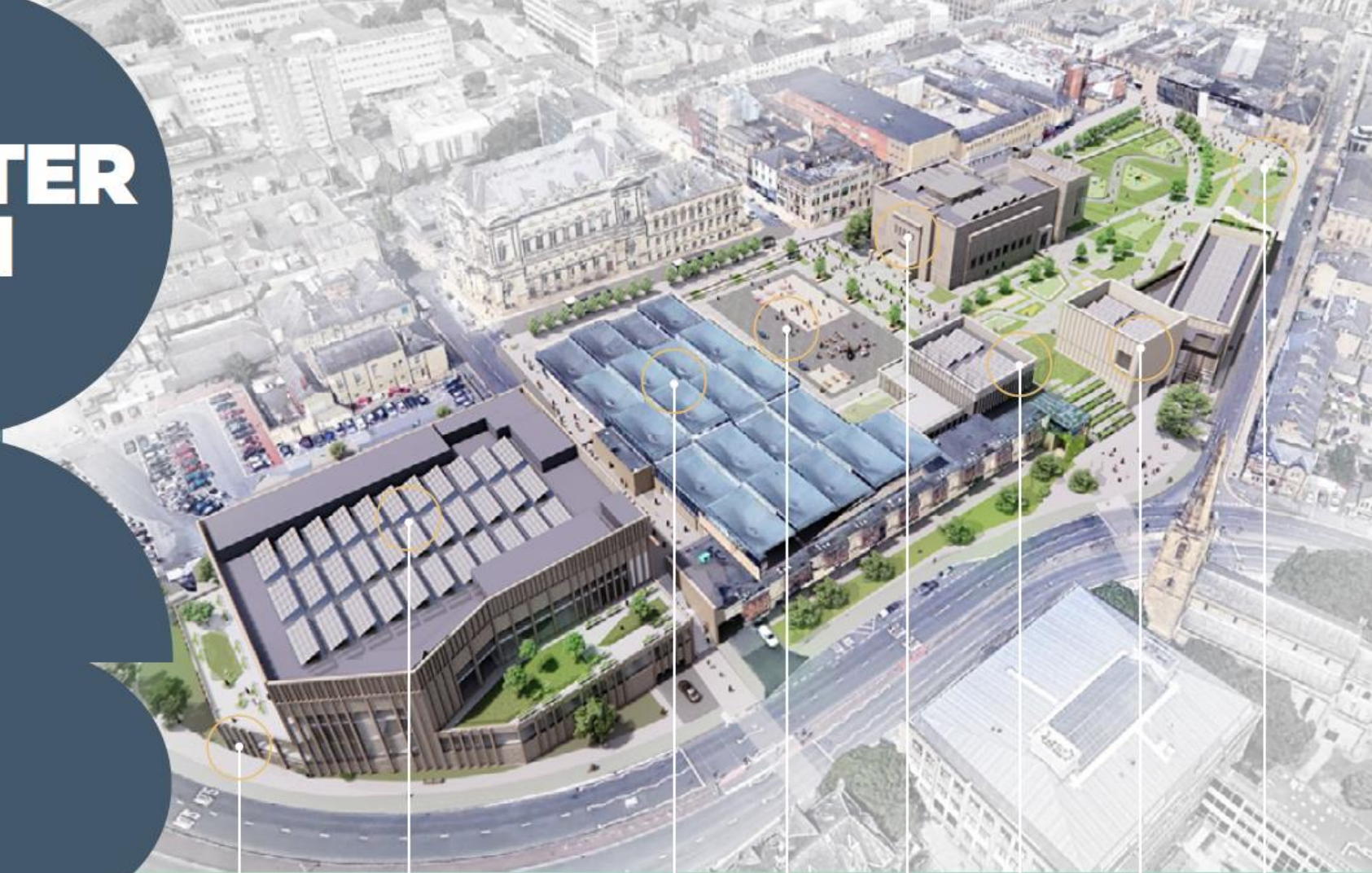


Huddersfield Open Market, artists impression



The iconic George Hotel, artists impression

# MASTER PLAN



Car Park

Entertainment Venue

Food Hall

Public Events Square

Museum and Art Gallery

Library

Multi-opportunity Space

Urban Park

## Our Cultural Heart

An ambitious centrepiece for Huddersfield and the whole of Kirklees, Our Cultural Heart will breathe new life into the town centre.

Bringing vibrancy into the area between Queensgate, King Street, Queen Street and Victoria Lane, this new hive of culture will deliver a surprising, inclusive and social destination for all.

Phase 1 construction starts Spring 2024. £52m.

OUR

CULTURAL

HEART

# Dewsbury

## Dewsbury Blueprint

- 10 year, £200m vision to bring transformational changes, creating a family friendly, active, accessible and attractive centre.
- £45m 'Towns Deal' funding secured, plus further £20m Council and £20m Levelling Up monies
- Significant investments in residential and office schemes, rejuvenating the public realm, retail and business space.
- Key projects: Dewsbury Market and Town Park, Dewsbury Bus Station, Daisy Hill Neighbourhood, Dewsbury Arcade, Transpennine Route Upgrade

## West Yorkshire Mass Transit Vision 2040

- A large-scale public transport system for West Yorkshire



Dewsbury Market proposals

# Smaller towns

- £5.6m to redevelop **Marsden Mills** from the Levelling Up Fund
- £15m LUF2 to kick start plans to transform **Batley** town centre Batley Blueprint, with £12m Levelling Up Fund
- £9m WYTF to deliver the Town Centre Access Plan and other capital investments in the **Holmfirth** Blueprint
- £10m TCF to develop a brand-new bus station and other developments in the **Heckmondwike** Blueprint
- TRU station redevelopment at **Huddersfield, Dewsbury, Marsden, Slaithwaite, Mirfield** and **Ravensthorpe**



**THE TIMES**

NORTH & NORTHEAST

**Slaithwaite, West Yorkshire,  
named best place to live in  
the North and Northeast  
2022**

There's a dash of entrepreneurial spirit and a splash of cool in  
this canalside mill village



Edward Highfield, Director Skills and Regeneration

[Edward.highfield@kirklees.gov.uk](mailto:Edward.highfield@kirklees.gov.uk)

---



[www.businesskirklees.com/invest](http://www.businesskirklees.com/invest)



[invest@kirklees.gov.uk](mailto:invest@kirklees.gov.uk)



01484 221000

